

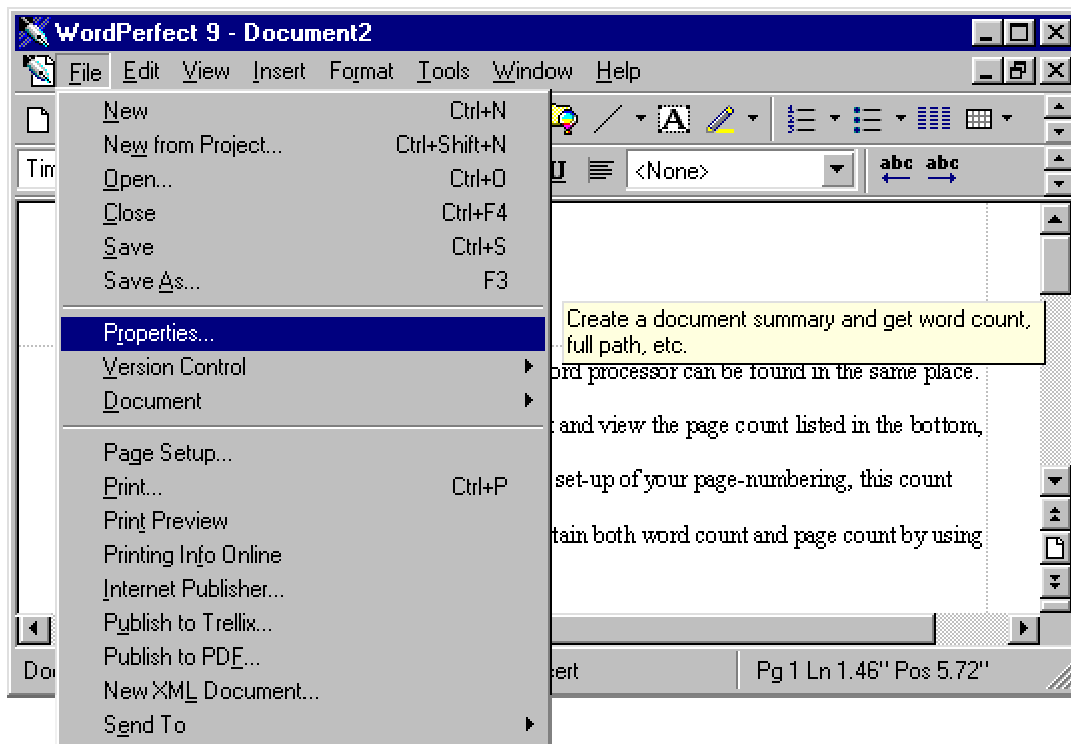
## Determining Page and Word Count (Corel WordPerfect)

Posted November 01, 2002  
PDF version

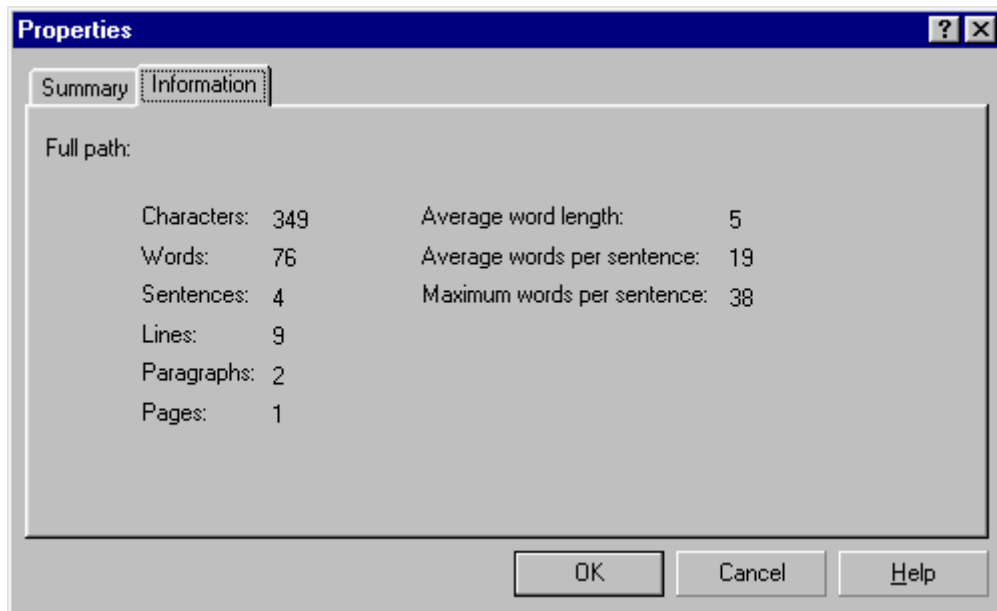
Determining the page and word count using a word processor like Corel WordPerfect or Microsoft Word can be done in nearly an instant. These counts can be extremely useful to know, as many things in the publishing industry are guided by the size of your manuscript—the most common being the cost to have it edited, formatted, printed, and sold. Due to this fact, it is important to get the most accurate count. The first step in making sure that you receive an accurate count is to make sure that your manuscript is a single file. If you have multiple files (for example, each chapter is a separate document), you might want to consider merging them into a single file. You will also want to make sure that the count does not include annotations or editorial comments, which would not be included in the submission version.

The page and word count functions of your word processor can be found in the same place. Though you can scroll to the end of your document and view the page count listed in the bottom, right-hand corner of your screen, depending on the set-up of your page-numbering, this count may not always be accurate. However, you may obtain both word count and page count by using the automated function of your word processor.

**Accessing document information.** In order to determine document information such as page and word count, go to **File** and **Properties** in your toolbar.



A properties menu will open, displaying the tabbed segments **Summary** and **Information**. You will want to select the **Information** tab.



**Information** will display the statistics of your document as follows:

**Characters** will count the number of characters (letters, numbers, and symbols) in your document.

**Words** will show you the total number of words in your document.

**Sentences** will display the number of sentences in your document.

**Lines** will display the number of lines in your document.

**Paragraphs** will display the number of paragraphs in your document.

**Pages** will show you the total number of pages in your document.

In addition, it will also display the average word length, average number of words per sentence, and the maximum number of words per sentence.

When a page count is requested, rather than a word count, you may want to clarify several points if the count is to determine a rate. Page counts can vary greatly depending upon the following: page spacing, format, font, font size, the use of dialogue, tabbed vs. spaced paragraphs, etc. On average, there are approximately 300 words per double-spaced page, using a 12 pt. standard font. Your page count may be inflated if your document contains graphics, tables, or graphs.

*Screenshots are of Corel WordPerfect 9  
and older or newer versions of this program may differ slightly in appearance.*

©2003 integrative ink - All rights reserved  
This tutorial may not be published, rewritten, or redistributed without permission.